

State-of-the-art,  
Turn-Key, Scalable  
and effective  
welding training  
solution powered by  
Augmented Reality.



soldamatic.com



# INDEX

State Of The Art Training .....	4
HyperReal-Sim .....	5
Access Anytime From Anywhere .....	6
Welding Joints .....	8
Soldamatic Robotics .....	10
Software For Every Purpose .....	11

# STATE OF THE ART TRAINING

SOLDAMATIC IE REVOLUTIONIZES WELDING TRAINING CREATING THE NEXT GENERATION OF WELDERS THE MOST COMPREHENSIVE, EFFECTIVE AND MODERN WELDING TRAINING SOLUTION.



**34%**

more certified welders than with traditional methodology



**56%**

reduction in learning time



**68%**

reduction in lab costs and environmental impact



**84%**

less accidents



**+75**

countries worldwide

SOLDAMATIC IE IS AVAILABLE IN 33 LANGUAGES

- |    |    |    |    |    |    |    |    |    |    |    |
|----|----|----|----|----|----|----|----|----|----|----|
| EN | ZH | KO | RO | VI | ES | IN | TH | SQ | MS | SV |
| DE | IT | PL | SL | TA | FR | JA | CS | SR | TE | DA |
| BR | TR | ID | LV | SI | RU | NL | HU | KA | KZ | LT |

## HYPERREAL-SIM

OFFERS THE BEST, MOST REALISTIC WELDING TRAINING SYSTEM  
ASIDE FROM REAL WELDING.



Power source-like  
controls



Real Welding  
mask



Real torches  
& gun



Welding  
Joints



Welding bead  
quality & settings

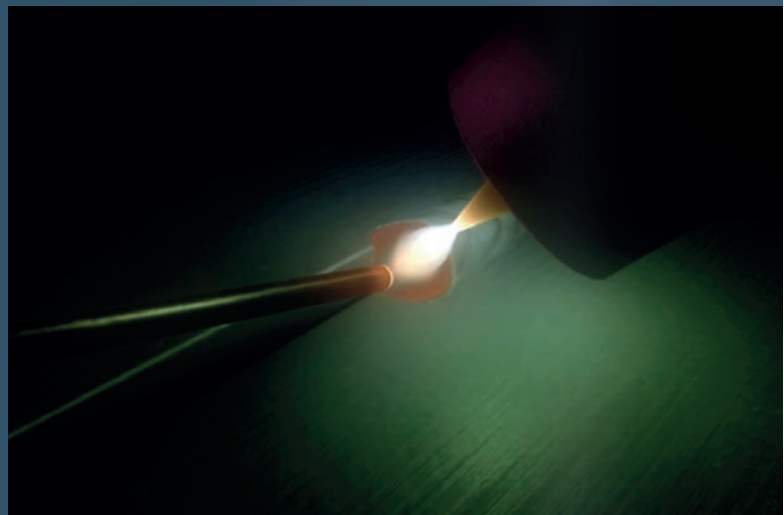


Transfer  
Modes



Remastered HD  
Welding Sound

HyperReal-SIM<sup>®</sup>



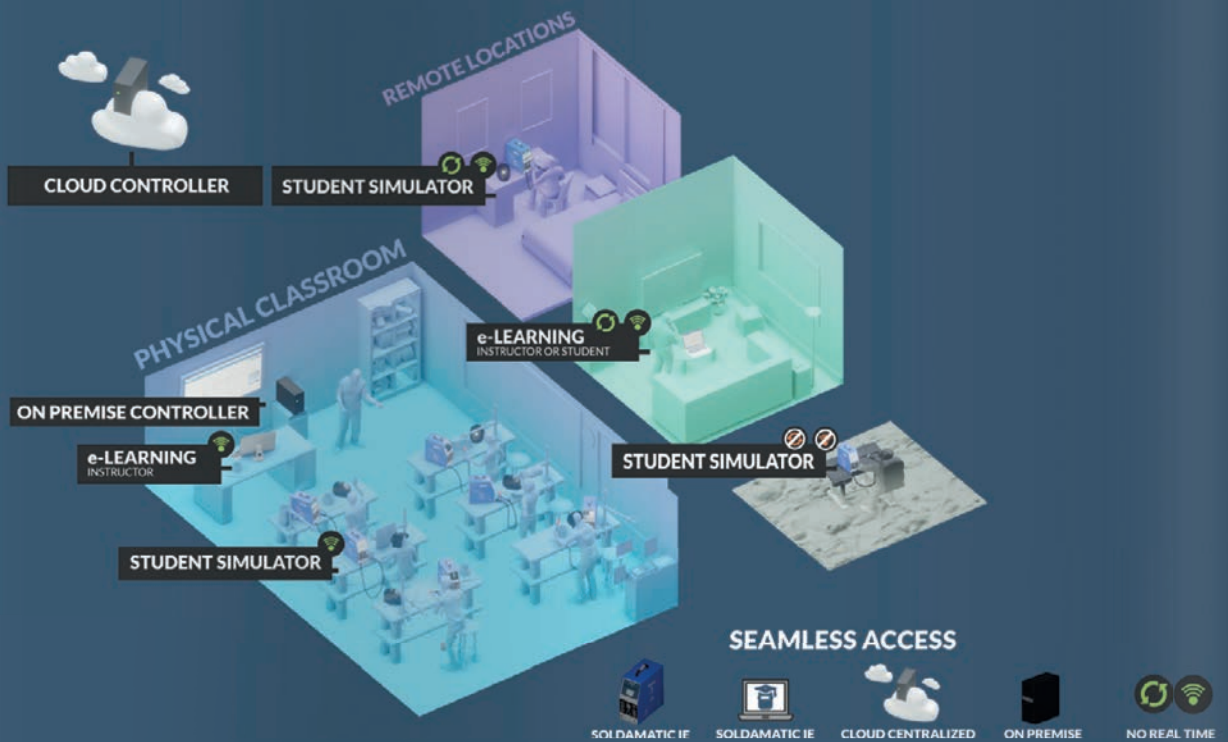
Two examples of Soldamatic's welding simulation

ALL THE WELDING PARAMETERS, VISUALS AND SOUND  
HAVE BEEN CALIBRATED AT THE REAL WELDING LAB

# ACCESS ANYTIME FROM ANYWHERE

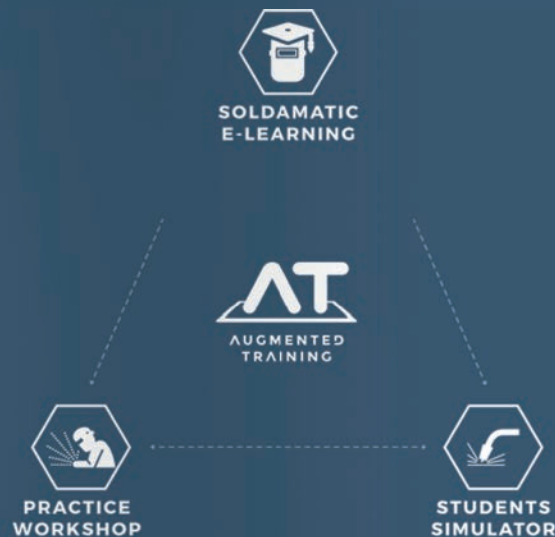
FULLY FLEXIBLE TRAINING SOLUTION – TRANSPARENT AND CONSISTENT EXPERIENCE ON-PREMISE AND REMOTE

- Transparent connectivity from classroom or remote locations
- Real time server connection is not required



## THE AUGMENTED TRAINING METHODOLOGY

- New educational paradigm
  - Combine AR simulation with real welding practice
- Allows instructors to manage numerous courses and students





LEARNING MANAGEMENT SYSTEM (LMS) APPLICATION SPECIFICALLY DESIGNED TO WORK UNDER THE AUGMENTED TRAINING METHODOLOGY

- Create and manage courses: Theory, practice and tests
- Review exercises and generate statistics and reports
- Share exercises, review the virtual classroom and chat live
- Students have their own access to their courses, contents, practices and reports

CONTENT BY INTERNATIONAL PUBLISHERS

*International  
Welding  
Experts*

**DVS** MEDIA



High quality welding curricula developed by international experts to be performed with Soldamatic IE.

# WELDING JOINTS

**MOST COMPREHENSIVE AND ADVANCED WELDING TRAINING JOINTS TO TRAIN EVERY TYPE AND LEVEL OF WELDER, AND NEARLY EVERY WELDING PROCESS SEQUENCE**

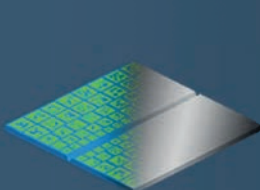


## EDUCATION WELDING JOINTS

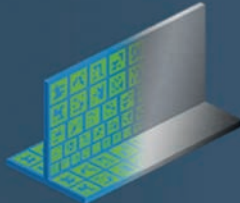
The most used welding joints for welding training in the world.  
UNE-EN ISO 9606 certified.



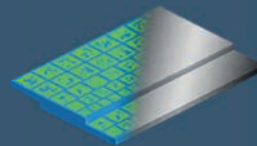
V-Butt pipe



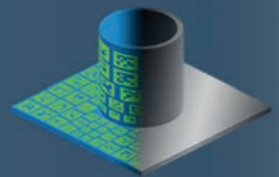
V-Butt plate



T-Angled plate to plate



Overlapped plate



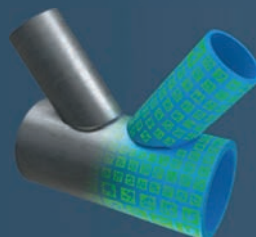
T-Angled pipe to plate

## INDUSTRIAL WELDING MULTIJOINTS

Bring real welding joints to Augmented Reality. Developed to cover specific welding training and performance needs.



From real

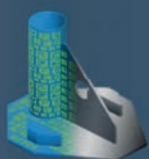


To Augmented Reality



## ADVANCED WELDING MULTIJOINTS

Designed for vertical sectors and advanced welders.



Foundational  
Ambidex

*GMAW (MIG/MAG)*  
Carbon Steel  
**Positions:** PB & PF



AWM-001

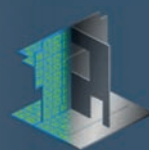


Foundational Complex  
Sequence

*GMAW (MIG/MAG)*  
Carbon Steel  
**Positions:** PB, PF, PD & PH



AWM-002



Heavy Industry  
Specific Practices

*GMAW (MIG/MAG)*  
Carbon Steel  
**Positions:** PB, PF, PD & PA



AWM-003



Automotive Chassis  
Assembly

*GMAW (MIG/MAG)*  
Pulsed Arc Aluminium  
**Positions:** PB



AWM-004



Automotive  
Thin Plates

*GMAW (MIG/MAG) Pulsed Arc*  
Aluminium  
**Positions:** PA, PB, PC, PD, PE, PF



AWM-005



Shipbuilding  
Open Root

*GMAW (MIG/MAG)*  
Carbon Steel  
**Positions:** PF



AWM-006



Shipbuilding  
Backing Strip

*GMAW (MIG/MAG)*  
Carbon Steel  
**Positions:** PF



AWM-007

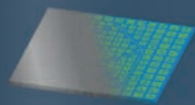


Pipeline 6"  
Schedule 80

*GMAW (MIG/MAG) & FCAW*  
Carbon Steel  
**Positions:** 6G



AWM-008



Robotic Foundational  
"House"

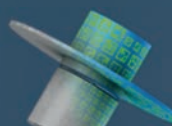


Robotic Foundational  
"Face"

*GMAW (MIG/MAG)*  
Carbon Steel  
**Positions:** PA



AWM-009/AWM-10



Pipeline 6GR

*GMAW (MIG/MAG)*  
Carbon Steel  
**Positions:** 6G



AWM011

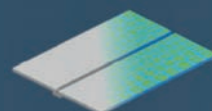


Pipeline Monster  
Coupon

*GMAW (MIG/MAG) Pulsed Arc*  
Carbon Steel  
**Positions:** 6G



AWM-012

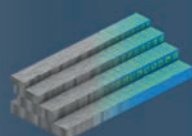


Open root with  
V-Groove

*GMAW (MIG/MAG) Pulsed Arc*  
Aluminium  
**Positions:** PA



AWM-013

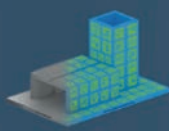


Foundational  
Multilap

*GMAW (MIG/MAG) nad GTAW Heliarc*  
Carbon Steel  
**Positions:** PA



AWM-014



Robotic Foundational  
Assembly

*GMAW (MIG/MAG)*  
Carbon Steel  
**Positions:** PA



AWM-015

# SOLDAMATIC ROBOTICS

FIRST OF ITS KIND, COMPREHENSIVE AND PROGRAMMABLE  
ROBOTIC WELDING TRAINING

SOLDAMATIC IE ROBOTIC WELDING TRAINING PROVIDES:

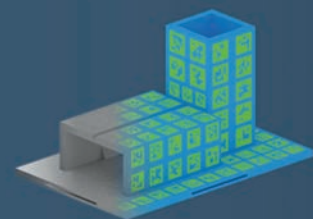
- Robotic welding training to create the 21<sup>st</sup> century skilled workforce.
- Allows programming of robots for specific welding routines.
- AR technology allows using the real teach pendant, real robot while reducing waste and cost.
- Review, analyze and inspect the welding bead during and after the simulation.



Introduction to robotic welding content included.



Soldermatic E-Learning connected to Robotics.



5 Education Welding Joints + 5 Advanced Welding Multijoints compatible.

# SOFTWARE FOR EVERY PURPOSE

## TRAINING

Attract young people and modernize welding training programs.

## ADVANCED

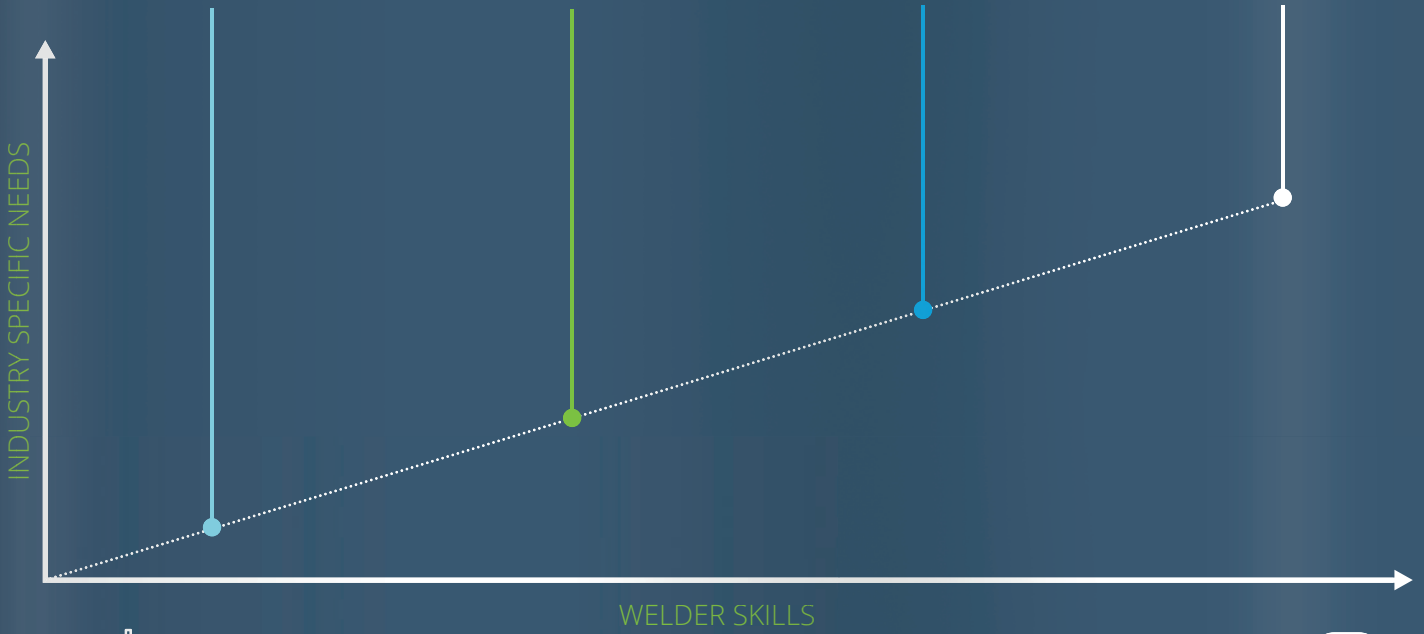
Cover industrial specific needs and requirements

## ROBOTICS

Create the 2st century skilled workforce

## INDUSTRIAL SERVICES

Train professional welders on specific processes and real welding joints



FROM BEGINNER

TO PROFESSIONAL

