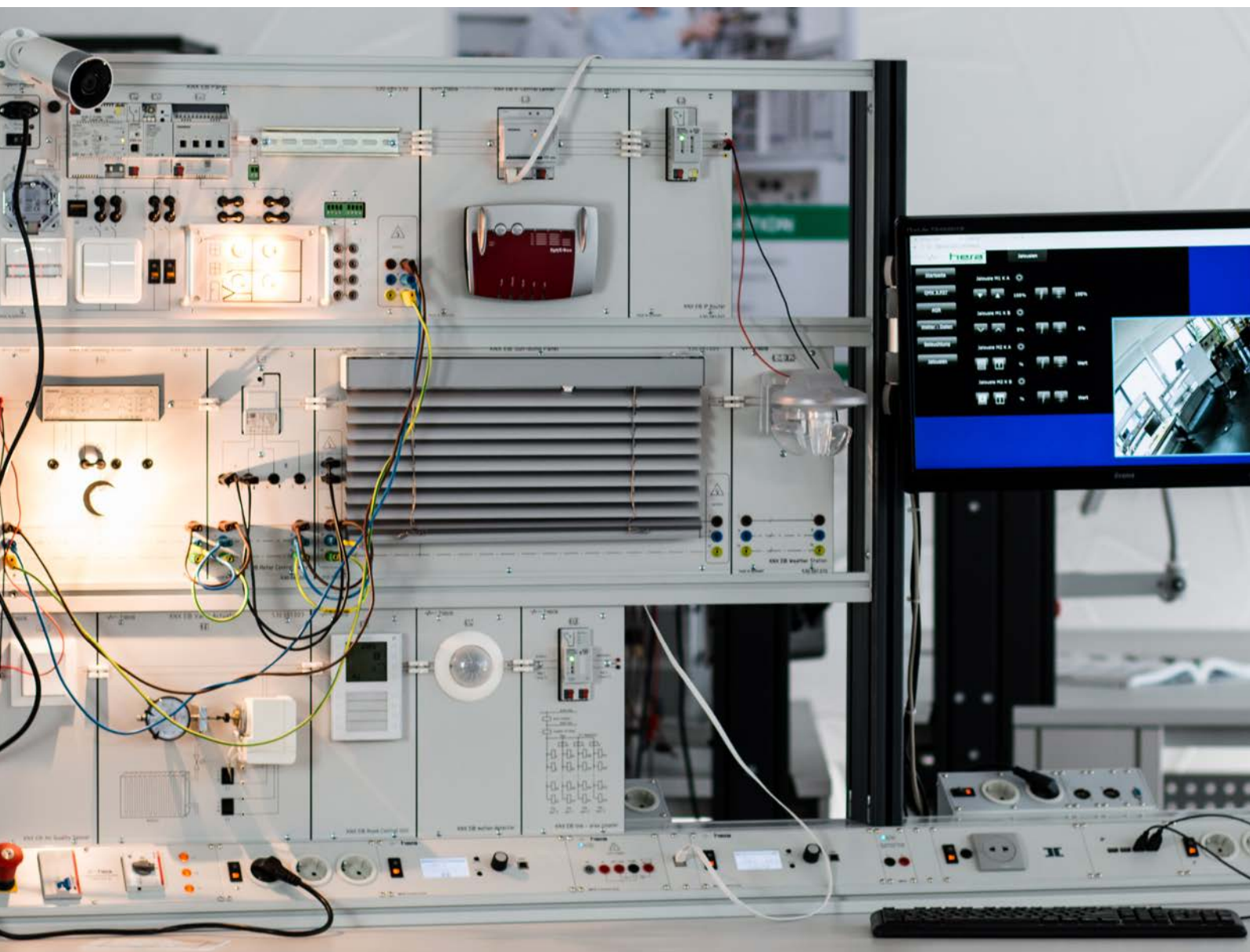


# INSTALLATION TECHNOLOGY - BUILDING AUTOMATION

The KNX bus is the most common field-bus solution for public buildings but of course it is also applicable for domestic homes. The importance of building automation is constantly rising as it provides smart solutions with comfort -, safety - and energy-saving features. Learn how to integrate and coordinate lighting, heating, shading, observing functions in your projects with different topologies.



## BUILDING AUTOMATION - KNX BUS

Building automation is an essential part of the installation technology due to comfort -, safety - and energy-saving features. The system teaches about the required components, how to set-up the bus-system and integrate the components, program the features and organize in different topologies, e.g. in multi-storey buildings.

The basic training can be done with the compact KNX EIB Panel and EIB software or for a extensive training some or all component panels can be added.

The profile rail allows the integration of extra components.

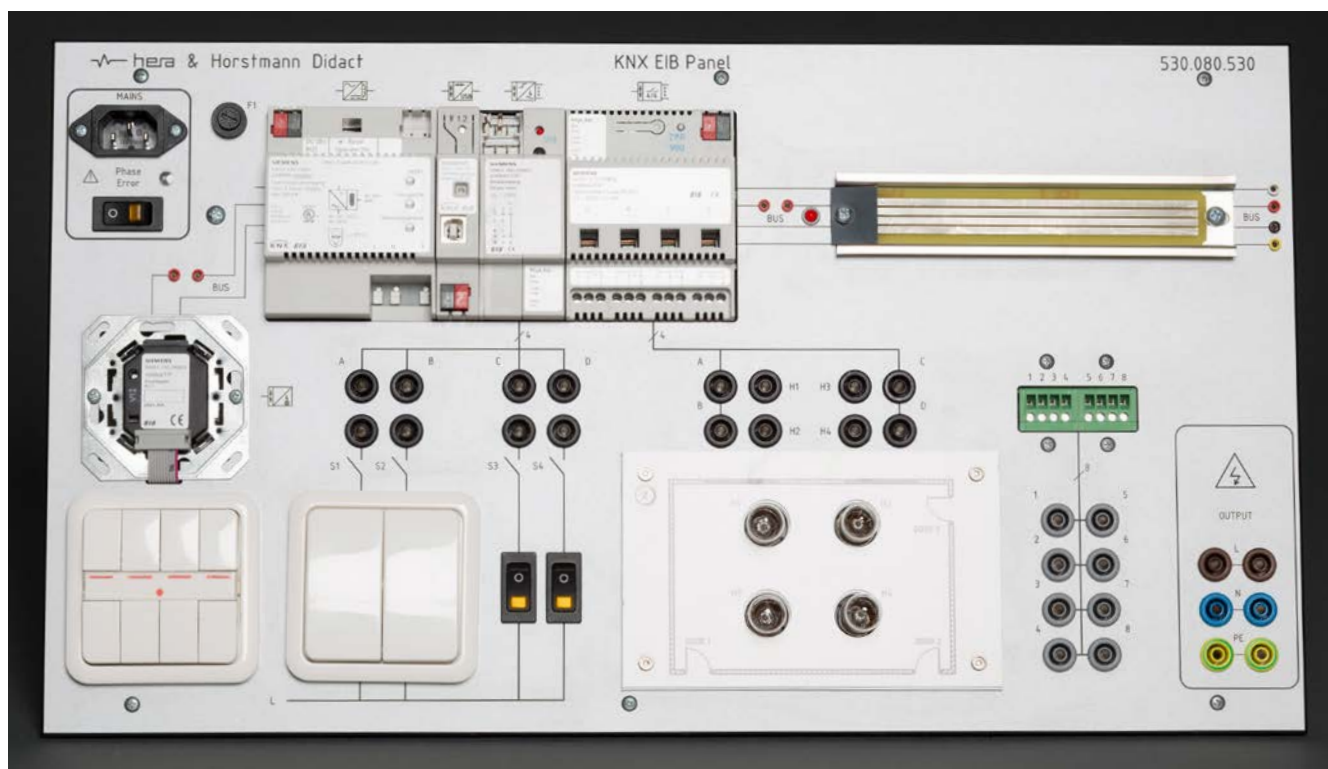
>> Operating voltage: 120V... 240V, 50/60Hz >>

Dimensions: 532 x 297mm (WxH)

### The panel hold following components:

- Power Supply with Choke
- USB Interface
- 4fold Binary Input
- 4fold Switching Actuator
- Bus Coupler UP
- 4fold Pushbutton with LED Indication
- LED Bus Detector
- Double Pushbutton
- 2x Control Switch
- 4 Lamps for Load Simulation
- 2 Masks for Room Simulations

If you decide for a system with several component panels, then we recommend to use a training system frame to keep your bench top clear.



KNX EIB Panel 530.080.530

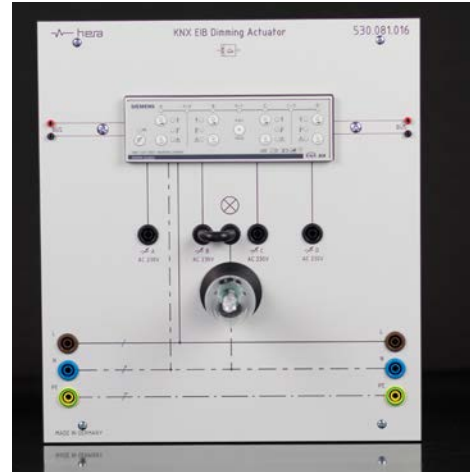
KNX EIB Installationsbus			
530.080.530	KNX EIB Panel	530.088.101	Manual with CD: Tests to KNX EIB Panel
530.082.000	Set of Cables and Connectors	530.088.001	Manual EIB: Planning, Installing and Visualizing (ETS5)
530.980.010	ETS 5 Lite Software Trainee Version		
530.980.011	ETS 5 Software Professional Version		

## BUILDING AUTOMATION - COMPONENT PANELS

The compact panel can be added by following component panels in order to achieve a smart system with the most common applications.



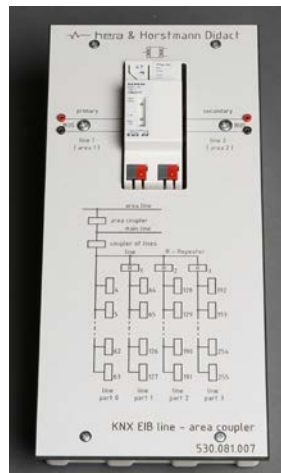
**530.081.021 IP Control Center (W: 266)**  
 communication between KNX devices and computer (or e.g. smart phone)  
 WLAN-Router  
 Web-Server for control and monitoring (e.g. control by computer, smart phone or notebook)  
 web-editor for creating a full graphic design with all control and monitoring elements



**530.081.016 KNX EIB Dimming Actuator 4fold (W: 266)**  
 4 outputs for switching and dimming of ohmic inductive and capacitive loads  
 3 outputs can alternatively used to switch RGB lights incl. E14 socket



**530.081.017 KNX EIB IP Router (W: 133)**  
 connects bus lines or bus areas by fast Ethernet 10base T and remote access in combination with the router



**530.081.007 KNX EIB Line - Area Coupler (W: 133)**  
 couples a KNX line to the main line or to an area line  
 used also as repeater



**530.081.020 KNX EIB Weather Station (W: 133)**  
 measurement and monitoring of wind / brightness / temperature  
 anemometer for measuring the wind speed



**530.081.008 KNX EIB Motion Sensor (W: 133)**

### Component Panels KNX EIB Installation Bus

530.081.021	KNX EIB IP Control Center with WLAN Router
530.081.016	KNX EIB 4fold Dimming Actuator
530.081.017	KNX EIB IP-Router
530.081.007	KNX EIB Line - Area Coupler
530.081.020	KNX EIB Weather Station
530.081.008	KNX EIB Motion Sensor

## BUILDING AUTOMATION - COMPONENT PANELS



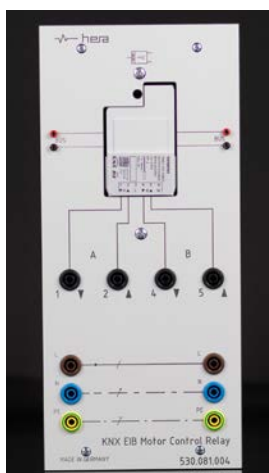
**530.081.015 KNX EIB Room Control Unit (W: 133)**  
control of heating, ventilation and air conditioning  
control of light, shutters and scenes  
temperature indication  
16 programmable buttons



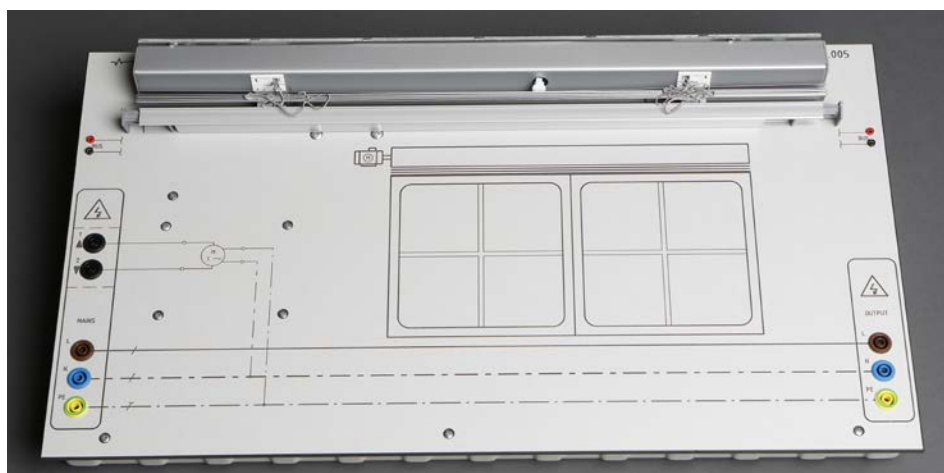
**530.081.018 KNX EIB Air Quality Sensor (W: 133)**  
room sensor for CO<sup>2</sup> and humidity measurement  
LED indication for air quality



**530.081.003 KNX EIB Heating Actuator (W: 266)**  
simulation of a heating actuator  
status indication with analogue reading  
input port simulation



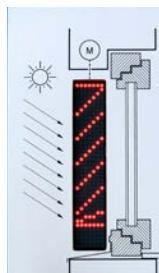
**530.081.004 KNX EIB Actuator for Sun Blinds (W: 532)**  
for max. 2 sun blinds



**530.081.005 KNX EIB Sun Blinds (W: 532)**  
with integrated end switches  
stop in each position and adjustable lamellas



**530.081.018 WIFI IP Camera for In- and Outdoor Applications (W: 166)**  
Resolution 1920x1080  
Lense 4mm, 16fold digital zoom  
1x IR LED, night vision camera up to 15m  
Access via Windows Client Software and iOS & Android App  
independent from KNX system



**530.081.022 KNX EIB LED Sun Blinds Simulation (W: 166)**

### Component Panels: Building Automation

530.081.015	KNX EIB Room Control Unit
530.081.019	KNX EIB Air Quality Sensor
530.081.003	KNX EIB Heating Actuator
530.081.004	KNX EIB Actuator for Sun Blinds
530.081.005	KNX EIB Sun Blinds (220V...240V only)
530.081.022	KNX EIB LED Sun Blinds Simulation
530.081.018	WIFI IP Camera for In- and Outdoor Applications