



COMPACT MODEL HEATING SYSTEM

COMPACT MODEL HEATING SYSTEM

Two compact trolleys with model set-up of a central heating system of latest technology. The model consists of a heating generator, hot water tank and a consuming unit.

Analogue meters for temperature measurement are integrated into the hot water cycle. More weld sockets for data acquisition within the system are integrated.

In standard the model is equipped with oil boiler for heat generation. An electronic boiler is optional available.

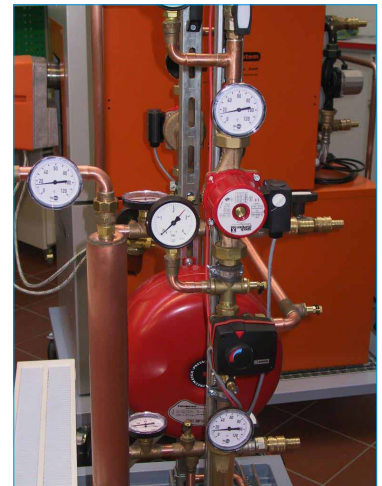
Learning content / tests

- Get familiar with the components of central heating systems.
- Comprehend and describe the set-up and functionality of the respective components.
- Fill-up, initial operation, regulation and start of a latest technology central heating system.
- Determine the specific characteristic of integrated components (characteristic curves of pump, mixer, heat exchanger and the whole system, etc.).
- Hydraulic regulation of heating systems
- Start-up of a latest technology heating control



Dimensions: 1.400 x 1.600 x 800mm
1.200 x 1.700 x 800mm
Weight: approx. 235kg / 125kg
Connection: Schuko 230 VAC (CEE 400/32A)

710.070.000	Compact model Heating System Oil
720.070.100	Compact Model Heating System Electric
780.021.000	PROFI Module Meter
780.106.000	Visualization Software UNI-Win



hera Laborsysteme GmbH

Hermann-Rapp-Str. 40

D-74572 Blaufelden

Tel. +49 (0) 7953 / 882-0

Fax +49 (0) 7953 / 1295

vertrieb@hera.de

www.hera.de

Vertretung:
Representative: